



V4.0 DNAevolution® - What's New?

Faster ARRI,
DPX and
Large Files



Improved
autoloader
locking and
queing



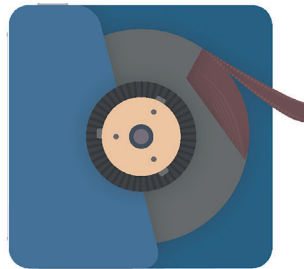
Avid and
Adobe project
archiving and
backup



Simplified,
ALE based
one step
Avid conform
engine



LTO



V4.0



Faster
verification
engine,
Parallel source
verification



More
meaningful
error codes



Graphical
system
monitoring
toolset



Graphical
logging,
reporting and
debugging
toolset

Phone: 1.949.480.7937

Fax: 1.949.477.4900

www.storagedna.com

Master Your Digital Workflow

Faster ARRI, DPX and Large Files

New and improved core data movement engine now capable of 1Gb/s transfer speed to LTFs for workflows involving ARRI, DPX, and other frame based formats. Performance enhancements include faster large file transfers from Ethernet-connected storage such as Avid® ISIS®.



Simplified, ALE based one step Avid conform engine

DNAevolution® now features a new re-designed conform tool designed specifically for Avid environments. The tool and workflow simplifies complex 4K, HD and mixed format online/offline workflows.



Graphical System Monitoring Toolset

A new graphical toolset is included enabling end users, partners and resellers to easily enable/disable various debugging parameters.

All logs can be viewed via a web based log viewer. The log viewer provides summary information on the number of CRITICAL and WARNING messages in each log. Logs can be downloaded for emailing to StorageDNA support for further analysis.



Avid and Adobe Project Archiving and Backup

Seamless Avid and Adobe project based archiving is also available. Avid projects and bins can be selected for archival, giving end-users an easy way to offload finished projects to LTO/LTFS. Additionally, the entire Avid project folder is also archived. Adobe projects work similarly in that entire Adobe project can be archived.



Faster verification engine, Parallel source verification

A new, faster verification engine has been implemented that enables faster check-summing during verification and the option to additionally check against the source tile to guarantee a true master copy.



Graphical Logging, Reporting and Debugging Toolset

A new, advanced system monitoring toolset has been implemented that reports on different health statistics is now included on all Linux based controllers and archive managers. The system stats monitoring window provides access to key system health metrics, allowing users to identify trends that could help in determining future hardware upgrades.



More meaningful error codes

Many error codes have been improved to convey more meaningful and actionable errors, enabling users to more easily resolve common issues themselves.



Improved Autoloader Locking and Queuing

A newly designed autoloader locking engine ensures multiple archive, restore, verification and format tasks that can run seamlessly in parallel.



Master Your Digital Workflow